

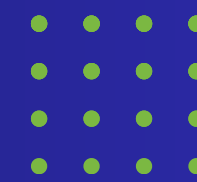


# PLATINUM MEMBERSHIP

*Program*



# PLATINUM MEMBERSHIP PROGRAM PROCEDURE



## ✓ SIGN PLATINUM MEMBERSHIP FORM

The client signs the Platinum Membership form provided by PT BAT INSTRUMEN BANK to initiate the enrollment process.

## ✓ INVITATION LETTER FOR OFFICE VISIT

Within 72 hours of issuing the Demand Deposit Certificate, PT BAT INSTRUMEN BANK sends an invitation letter to the client, inviting them to visit Jakarta and complete the remaining process at the bank's office.

## ✓ Invoice Generation and Wire Transfer

PT BAT INSTRUMEN BANK raises an invoice of 1M USD in favor of the client. The client wires transfer 1M USD to PT BAT INSTRUMEN BANK's designated account.

## ✓ DEMAND DEPOSIT CERTIFICATE ISSUANCE

The BAT BANK issues a Demand Deposit Certificate against the deposit, certificates BAT BANK central bank of Indonesia within 72 hours





## ✔ Company Formation, KITAS, and Corporate Bank Account Opening

During the office visit, PT BAT INSTRUMEN BANK assists the client in company formation (for corporates), KITAS issuance for stakeholders, and opening corporate bank accounts.

This process typically takes a minimum of 14 banking days to complete.

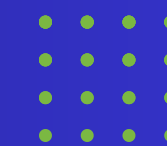


## ✔ Platinum Program Benefits Activation

Once the company formation, KITAS issuance, and account opening are finalized, the client gains access to Platinum Program benefits within 45 days.

These benefits include overdraft facilities, debit cards, and credit cards tailored to the client's financial needs.





## ✔ SBLC, BG, LC Issuance Process

For requests related to SBLC (Standby Letter of Credit), BG (Bank Guarantee), LC (Letter of Credit), etc., the client must send an official email to PT BAT INSTRUMEN BANK.

Upon receipt of the request and necessary documentation, PT BAT INSTRUMEN BANK initiates the process to issue the bank instruments in favor of the client.

This process typically takes 15 banking days after the required documents are provide

## ✔ Monetization and Trade Program Establishment

Once the bank instruments are issued, PT BAT INSTRUMEN BANK facilitates monetization and trade programs within 15 banking days.

This involves leveraging the bank instruments for financial transactions and trade opportunities as per the client's requirements.

## ✔ Private Placement Program (PPP) Integration

Throughout the Platinum Membership process, clients have the option to integrate into the Private Placement Program (PPP).

PT BAT INSTRUMEN BANK provides detailed guidance and support to clients interested in PPP, ensuring seamless integration and potential financial growth opportunities.



# COMPLETION AND FOLLOW-UP



- ✓ PT BAT INSTRUMEN BANK maintains regular communication with the client throughout the Platinum Membership process, providing updates and assistance as needed.
- ✓ Upon completion of all procedures and programs, PT BAT INSTRUMEN BANK continues to offer ongoing support and assistance to ensure the client's financial objectives are met effectively.